

WALTON SMALL BOATS HEAD

9th December 2023

CLUB CAPTAINS AND COACHES MUST ENSURE THAT ALL COMPETITORS READ AND UNDERSTAND THESE INSTRUCTIONS.

We are constantly monitoring current river and weather conditions and any announcement regarding the running of the event will be made on Tuesday 5th December and posted on the website by 14:00.

These instructions should be read in conjunction with the course map

Please do not attempt to park in Sunbury Lane. We have received far too many complaints from our neighbours in recent years, and they are very likely to pass registration details of inconsiderately or illegally parked vehicles to the local police

If you are dropping someone off who is boating from Walton Rowing Club, please do so at the Xcel Leisure Centre, Waterside Drive, KT12 2JG which is only a short walk away.

There is parking for spectators at the Xcel Centre, Waterside Drive, KT12 2JG, and at the Cowey Sale car park.

Four designated trailer parking areas have been agreed with the local authority. Trailers and cars with boats on top will be allocated a parking location prior to the event. Parking spaces in each are strictly limited therefore please only use the space allocated you.

Competitors bringing boats on roof racks should drop boats off by the Xcel Centre on Waterside Lane near the Oil Terminal Roundabout and take the boat to the grass area towards Walton Rowing Club, then park your vehicle in the Excel Centre or on Waterside Drive when parking restrictions allow. There will be marshals to help.

INSTRUCTIONS FOR COMPETITORS AND OTHER VISITORS

The race will be run in accordance with the guidelines of the British Rowing Row Safe Guide to Good Practice in Rowing and the British Rowing Rules of Racing.

All competitors must be competent & capable of completing a 10k outing per division entered. They are responsible for deciding, in consultation with their coaches and club captains, whether they are able to do this in the conditions prevailing on race day. If there is a North Easterly wind blowing it can get choppy on the finishing reach so please check conditions on the day.

It is December and the weather may be cold or wet on race day. Please check the weather forecast in advance and dress appropriately, remembering to bring a change of kit for each division that you intend racing in. Multiple thin layers and a lightweight waterproof keep you warm and dry far better than one thick top. Hoodies are good for keeping you warm on the bank but are not good for sculling in and are awkward to store in small boats during racing.

Walton Rowing Club will be open with showers, changing facilities and toilets but PLEASE DO NOT LEAVE ANY VALUABLES IN THE CHANGING ROOM. There will also be portaloos outside in front of the building. Registration will be upstairs in the clubroom.

RACE NUMBERS will be made available at your allocated parking area or delivered directly to local clubs. Wear your numbers clearly on bow's warm-up top and racing vest or you may not be timed. It can be difficult reading the numbers at the finish; crews wearing duplicate or wrong

numbers are liable to be ignored. Empacher slot numbers will be issued and should be returned to Walton RC or put in the boxes provided at the boating points as crews come off the water.

RESULTS: We will try to make provisional results of each division available as soon as possible at the club and online. The final results and prizes will be presented at Walton Rowing Club as soon as possible after racing has finished.

REFRESHMENTS: Hot and cold drinks will be available all day at Walton Rowing Club and at the Cowey Sale cafe.

WEBSITE: The start order and results will both be available at www.waltonrowingclub.co.uk. Any notices concerning the race will also be posted to this site.

PARKING (Please see separate map of car parks)

SPECTATORS/COMPETITORS

There is parking at the Xcel Centre, Waterside Drive, KT12 2JG. Walton Rowing Club and race finish are a short walk along the towpath.

Cowey Sale Car Park by Walton Bridge also has space for spectator parking.

PARKING AT WALTON ROWING CLUB KT12 2JA

Please do not attempt to park in Sunbury Lane unless allocated a space. Trailer spaces are allocated prior to the event. Access is via Sunbury Lane. Once your trailer is in position please park your towing vehicle safely.

If you wish to drop your trailer off on Friday, please contact us.

PARKING AT COWEY SALE CAR PARK (Just upstream of Walton Bridge)

Trailer spaces are allocated prior to the event. Vehicles should enter through the gate at the **far end** from Walton Bridge (Café end) and park as directed by the marshals. Please ensure that all boat trailers are removed by 16.30 hours, at which time the car park gate will be locked.

PARKING OF TRAILERS ON WALTON LANE (the river road) OR THE DRIVEWAY THAT GOES UNDER WALTON BRIDGE TO THE MARINA AT COWEY SALE IS STRICTLY PROHIBITED.

PARKING AT DESBOROUGH SAILING CLUB (Ferry Lane, Shepperton, TW17 9LQ)

Trailer spaces are allocated prior to the event. Access is via Ferry Lane, 100m from the junction with Chertsey Road. Follow the track and bear left where the track forks. Parking on the site is strictly limited, do not park on the grass. There is on road parking further down Ferry Lane.

VEHICLES WITH ROOFRACKS DROPPING BOATS OFF IN WATERSIDE DRIVE

Local sign posts are to the Xcel Centre KT12 2JG.

Parking is on the left-hand-side of the road opposite the leisure centre. Please do not restrict access to the roundabout. There will be marshals to help you. See map on last page.

Space for boats and trestles is available on the grass towards Walton Rowing Club. Please use the tarmac path, not the towpath). Boating is via the WRC/St Georges landing stage.

ON THE WATER (Please see separate map of course)

BOATING: Crews in the first 60 starters in each division must be sure to arrive in the marshalling area at least ten minutes before the start time of their division. Lower starters should be in position by the start time for that division. If you are boating from Walton RC you will need 30 – 40 minutes to paddle up to the start and if boating from Cowey Sale 20 – 25 minutes dependent upon ability and stream conditions. Please boat in plenty of time.

At **Walton RC** use the WRC/St Georges landing stage. Do not carry boats along the towpath, please use the tarmac path and roadway just away from the river and access the stage through the WRC gate.

At **Cowey Sale** there will be a floating pontoon 100m above the bridge. Take care when crossing the road. When returning to the pontoon, follow marshals instructions as to crossing the river.

At **Desborough Sailing Club**, use the clubs landing stage. Marshalling is on the Middlesex side, upstream of the landing stage. If you wish to warm up boat in sufficient time (at least 25 mins before division start time) to paddle down the Cut and back up around the Old River. Do not attempt to row downstream along the Old River.

MARSHALLING: Crews should proceed to the start via the Old River (see maps on final page and Event Map) as the Desborough Cut is closed to all upstream traffic. Crews travelling upstream must keep to the Middlesex side of the river and not cut the corner at Walton Bridge. Crews will marshal on the Middlesex side of the Old River with the lowest number in each section waiting on the Old River opposite the Start Line. Crews outside the first 100 in each division should stay below Shepperton Manor (the large white house on the bend). At a signal from the marshal, crews will move upstream, in order, and paddle up the Middlesex side of d'Oyly Carte Island and turn anti-clockwise round the Turning Buoy above the island. Crews must follow instructions given by Marshals or by EA officers before and during the race; these will be given by megaphone. Crews who disobey this rule render their whole club liable to disqualification.

Crews will be started at about 10 second intervals from the Elmbridge Canoe Club stage, and times will be taken from a point approximately 20 metres downstream of the Starter.

THE DESBOROUGH CHANNEL IS CLOSED TO ALL NON-RACE TRAFFIC AND ANY UPSTREAM TRAFFIC FROM 9.30 AM TO 4.00 PM

<p>All competitors note that each section will start on time without reference to absentees. Crews in the first 60 starters in each division should boat early in order to avoid being delayed by slower boats on the way to the start.</p>
--

THE RACE: Crews must keep to the Surrey (towpath) side of the river. The Desborough Cut is closed to non-racing traffic and the course is then buoyed all the way from the bottom of the Cut to the finish. Penalties may be imposed on crews passing the wrong side of the buoys. Move well to the Surrey bank when being overtaken. All competitors should listen out for instructions from Umpires at their various positions on the course. Failure to do so may mean disqualification.

Crews must pay particular attention when navigating Walton Bridge. Be prepared to steer towards the Surrey side as soon as you have passed through the bridge.

On finishing your race keep paddling down until below Walton Rowing Club. Crews returning to Walton Rowing Club landing stage should turn to the Surrey (towpath) bank and join the queue keeping close in to the bank.. Crews returning to Cowey Sale and Desborough Sailing Club must keep well to the Middlesex bank and be especially vigilant in the vicinity of the finish line. Do not attempt to cross the river to the Cowey Sale bank until you are through Walton Bridge and it is safe to do so as instructed by the marshals. Crews returning to Desborough Sailing Club continue past Cowey Sale keeping to the Middlesex side of the river.

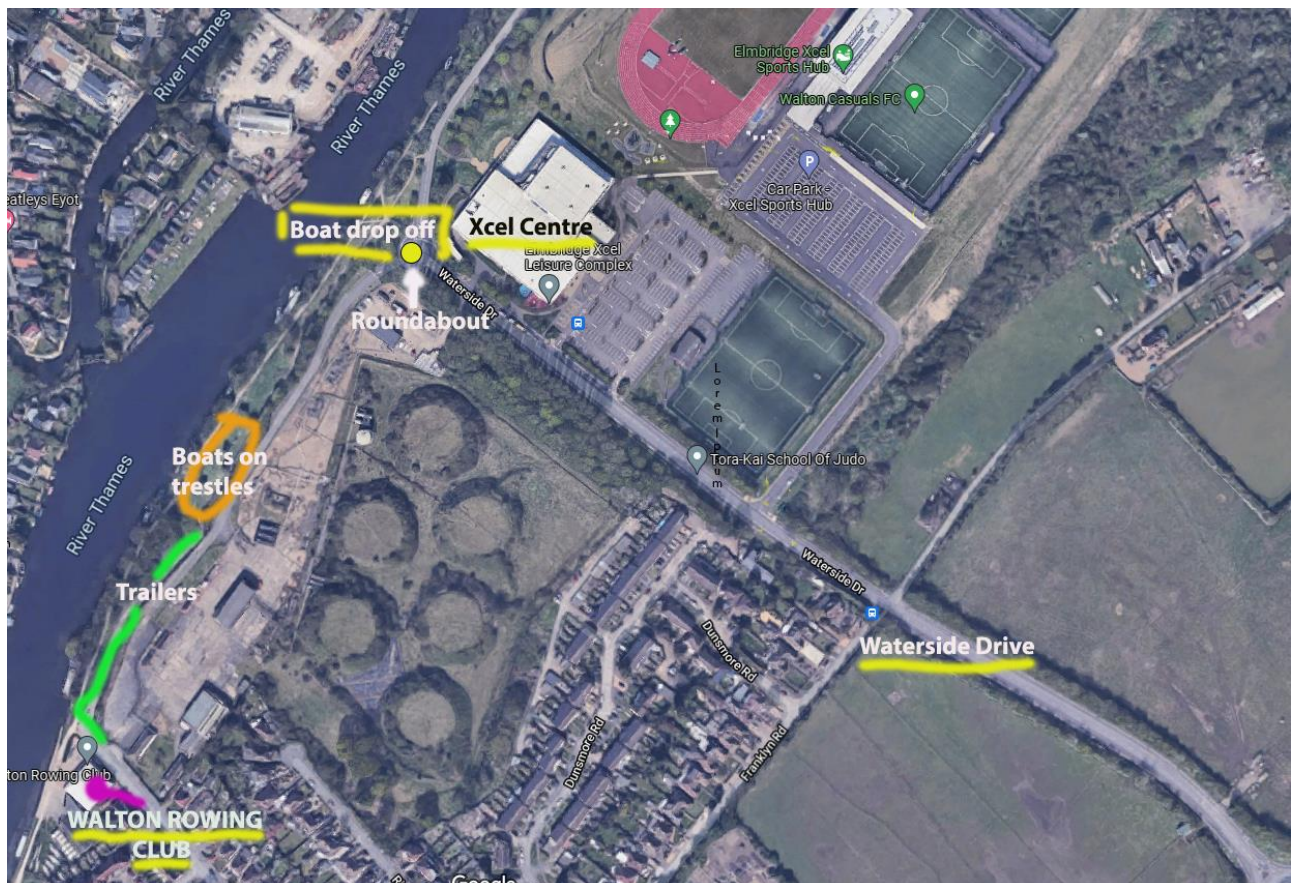
It is a rule of this race that steering or coaching instructions **must not be given by megaphone.**

SWANS: There are large numbers of swans on the Walton Reach, particularly close to the Anglers Hotel. Competitors must be vigilant as a collision with a swan is not in the interests of either party!

SAFETY: The organisers of Walton Small Boats Head believe that they have taken all reasonable steps to comply with the British Rowing Row Safe Guide to Good Practice in Rowing and to ensure that racing conditions are both fair and safe. However, the following additional conditions now apply. By taking part, crews accept these conditions and agree that they are reasonable:

1. Only Crews that coaches believe are competent should be allowed to compete.
2. Crews must check their own equipment before racing in accordance with the British Rowing Row Safe Guide to Good Practice in Rowing, section 2.3.
3. Club Captains must ensure that every member of every crew has read these Instructions for Competitors and ensure that they understand them. Club Captains and coaches must ensure that parents of junior competitors are also aware of these conditions and accept them.
4. Competitors take part at their own risk. In the event of a collision Walton Small Boats Head accepts no responsibility and it is up to the competitors to apportion liability between themselves.
5. There will be first aid posts, with an ambulance, at, Cowey Sale (just upstream of Walton Bridge) and Walton Rowing Club. Qualified first aiders man all the safety boats of which there will be six, based behind Desborough Island, at the top and bottom of Desborough Cut, at Walton Bridge and near the finish. Marshals are instructed to give priority to dealing with safety matters. Crews must comply with the instructions of marshals and safety crew.
6. All racing craft must carry their club six-digit identification code as recognised by British Rowing. Crews or clubs not complying with this may be penalised.
7. All clubs taking part must have insurance meeting the requirements of the British Rowing Row Safe Guide to Good Practice in Rowing, section 1.5.
8. Coaches and supporters following crews on cycles must give due consideration to the safety of pedestrians on the riverside path.

Map of Walton Rowing Club and Waterside Drive



Map of Cowey Sale (Walton Bridge) carpark



Map of Desborough Sailing Club (TW17 9LQ) and route to the start

